

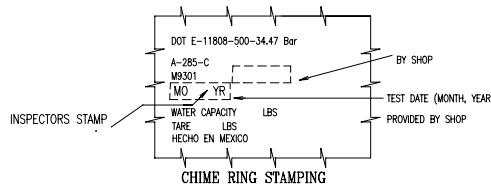
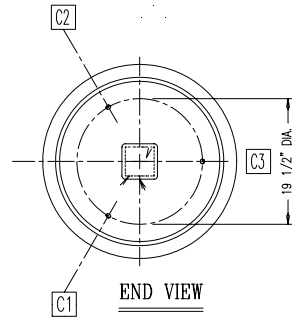
- ### CONSTRUCTION NOTES
- CONTAINER DESIGNED TO TRINITY SPECIFICATION NO. S-66071 AND CONFORMS TO D.O.T. EXEMPTION NO. E-11808 (TRANSPORT CANADA CERTIFICATE No.: TC-M01)
 - CORROSION ALLOWANCE: HEADS----- 0.000\"/>

MATERIAL SPECIFICATIONS

HEADS: (HOT FORMED)	A285C (MAXIMUM CARBON .31%) **
SHELL:	A285C (MAXIMUM CARBON .31%) **
STRUCTURAL:	C.S.
COUPLINGS:	A105
INTERNAL PIPE:	A106B
VALVES	179.300-17
FUSE PLUGS	179.300-15

** MATERIAL SHALL MEET D.O.T. 179.300-7 (c).

NOT CERTIFICATE TO MANUFACTURE



MARK	QTY	SIZE	DESCRIPTION	SERVICE	GEN. NOTES	DRAWING	DESCRIPTION
						121032	ELLIPSOIDAL HEAD BEVEL
						121031	INTERNAL PIPE ASSEMBLY
						121030	CHIME RING LONG-HEAD ASSEMBLY
						121029	CHIME RING SHORT-HEAD ASSEMBLY
						121028	PAID
						121027	NAME PLATE
						121026	"B" KIT SUPPORT
						121025	WARNING TAG
						121033	HOLD DOWN CLIPS
						121012	SPECIAL COUPLING
						121009	INTERNAL PIPING
							SHELL BLANK DIMENSIONS
						121007	DOME
						221007	CHIME RING DIMENSIONS
						121023	ELLIP. HEAD BLANK 2:1 30. 0.0.
						121010	LEFT ELLIP. HEAD 2:1 30. 0.0.
						121011	RIGHT ELLIP. HEAD 2:1 30. 0.0.

SCHEDULE OF OPENINGS

REFERENCE DRAWING LIST

REV	BY	DATE	REVISION

TRINITY IND. DE MEXICO S.A. DE C.V.
CAJALZA DE LOS MARISALES LOTE 1 EX-HAENDIA DE XALPA HUEHUETOC ADO. DE MEX.

TRINITY INDUSTRIES, INC.
 L.P.G. DIVISION

THIS DRAWING CONTAINS CONFIDENTIAL AND PROPRIETARY INFORMATION OF TRINITY INDUSTRIES, INC. THE DRAWING IS THE PROPERTY OF TRINITY INDUSTRIES, INC. AND IS LOANED FOR ENGINEERING REVIEW ONLY. THE DRAWINGS MAY NOT BE COPIED OR USED FOR ANY OTHER PURPOSE WITHOUT THE WRITTEN CONSENT OF TRINITY INDUSTRIES, INC. AND SHALL BE RETURNED ALONG WITH ALL COPIES UPON DEMAND. © TRINITY INDUSTRIES, INC. 1995

DRAWN/MCRAE	10-15-76
CHKD/WHH	10-15-76
APPD	
FILE NAME	S66071E1
LCN	
WEIGHT	

EXEMPTION D.O.T. E-11808
METRIC TON CONTAINER

DRAWING NO:	S-66072	SHEET 1 OF 1	REV 0	SIZE D
-------------	---------	--------------	-------	--------