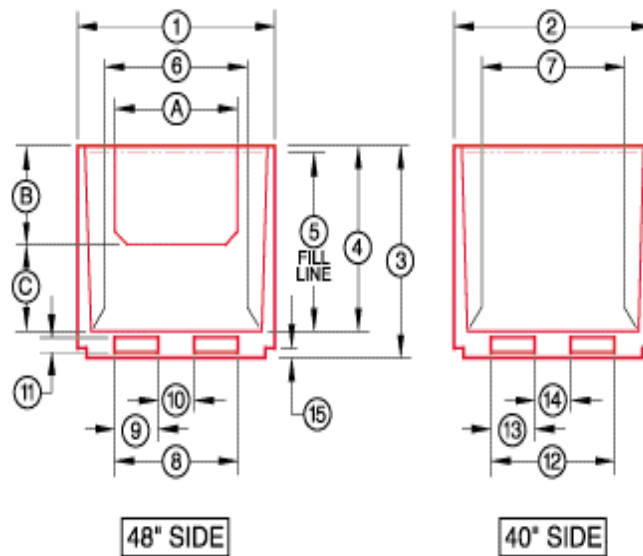


ENGINEERING DRAWING



4048ns Engineering Drawing

Container	4025ns	4029ns	4034ns	4039ns	4042ns	40423ns ¹	4047ns	4050ns
External Dimensions								
1	47.3	47.3	47.3	47.3	47.3	47.3	47.3	47.3
2	39.6	39.6	39.6	39.6	39.6	39.6	39.6	39.6
3	25.3	29.9	34.3	39.4	42.3	42.3	47.5	50.1
Internal Dimensions								
4	19.6	24.1	28.6	33.8	36.6	36.6	41.9	44.5
5	18.6	23.1	27.6	32.8	35.6	35.6	40.9	43.5
6	43.6	43.6	43.6	43.6	43.6	43.6	43.6	43.6
7	36	36	36	36	36	36	36	35.6
Fork Tunnel Dimensions								
8	32.3	32.3	32.3	32.3	32.3	32.3	32.3	32.3
9	12.1	12.1	12.1	12.1	12.1	12.1	12.1	12.1
10	8.0	8.0	8.0	8.0	8.0	8.0	8.0	8.0
11	3.6	3.6	3.6	3.6	3.6	3.6	3.6	3.6
12	28.8	28.8	28.8	28.8	28.8	28.8	28.8	28.8
13	11.6	11.6	11.6	11.6	11.6	11.6	11.6	11.6
14	5.6	5.6	5.6	5.6	5.6	5.6	5.6	5.6
Stack Interlock								
15	0.8	0.8	0.8	0.8	0.8	0.8	0.8	0.8
Drop Door Dimensions								
A	31.9	31.9	31.9	31.9	31.9	31.9	31.9	31.9
B	11.9	12.8	16.8	19.5	20.8	19.5	19.5	20.8
C	7.8	11.3	11.8	14.3	15.8	17.1	22.4	23.7

(Units in inches)

All dimensions and specifications are approximate.

Interior height dimensions measured from center; variances may result due to center crown.

Tare weight will vary based on color, height and configuration. Please inquire for more information.

Non-standard colors require a minimum quantity of 500.

Performance characteristics are based on uniform static loads and may be affected by concentrated loads and elevated temperatures.

Standard drop door options include:

1 or 2 drop doors on the 48" side(s).

1 drop door on a 48" side, with one drop door on right, 40" side.

Materials and workmanship guaranteed for 3 years. Material: HDPE.

¹ This model is specially designed with a 3" storage space to accommodate layer pads and other dunnage.